

WAYCOVER BEFORE REPAIR

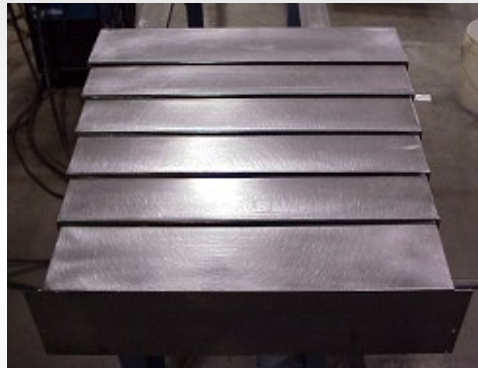


BEFORE

WAYCOVER AFTER REPAIR



AFTER



### Repair Services Available For:

- Metal & Non-Metal Waycovers
- Bellows Waycovers
- Roll-up Machine Waycovers
- Telescopic Waycovers
- Apron Waycovers
- Waycover Kits

Special Delivery Service Available:  
24hr, 48hr, and 72hr

## CNC WAYCOVER REPAIR

W134 N5368 CAMPBELL DR.  
MENOMONEE FALLS, WI 53051

14255 COMMERCIAL PKWY.  
SOUTH BEOIT, IL 61080

800-242-7981

[www.cncwaycover.com](http://www.cncwaycover.com)

# CNC WAYCOVER REPAIR

-WAYCOVER REPAIR SPECIALISTS-

We understand that buying a new waycover is expensive...



*We are here to help!*

Contact us TODAY for a quote to repair the one you already have!

800-242-7981

[www.cncwaycover.com](http://www.cncwaycover.com)

# CNC WAYCOVER REPAIR

## WHAT CAN WE OFFER?

- Job Quotes in 24-48 Hours
- Standard Turnaround in 7 Days
- No Expediting Fee
- Customer Support Before and After Service
- Suggestions to Improve Your Waycover

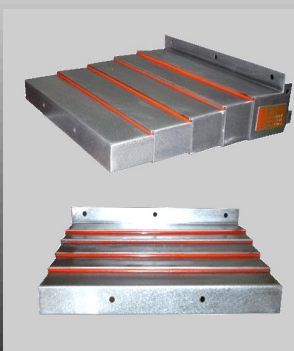
**WE'LL SAVE YOUR COMPANY  
\$\$\$ MONEY \$\$\$**

## ADMINISTRATIVE SERVICES

- Damage Assessment
- On-Time Quotes
- Repaired to OEM Standards or Better
- On-Site Assessment
- Warranty on Parts & Labor
- On-Time Delivery
- On-Going Service and Support
- We are not an OEM Supplier, therefore we do not have to sell you a NEW Waycover.
- Last Resort: Replacement of your Waycover

## SHOP SERVICES

- Disassembly
- Clean & Polish
- Dent Removal
- Box Replacement (If Needed)



- Roller Replacement
- Side Guide Replacement
- Wiper Replacement
- Reassembly
- Cycle Test

# Service Request Form

## CNC WAYCOVER REPAIR

### Inquiry Sheet for Steel Way Cover

Quantity: \_\_\_\_\_ Delivery Date: \_\_\_\_\_

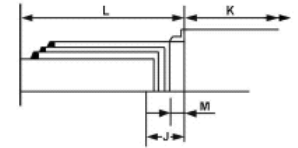
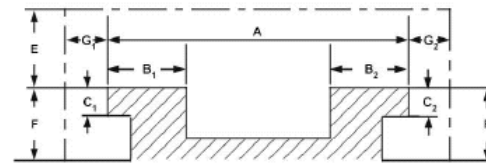
Company Name: \_\_\_\_\_ Contact: \_\_\_\_\_

Address: \_\_\_\_\_

Phone: \_\_\_\_\_ FAX: \_\_\_\_\_

Customer Drawing Reference: \_\_\_\_\_

Application / Machine: \_\_\_\_\_



### Position of Cover on Machine

- horizontal
- crossrail
- vertical column
- incline slideway

### Required Design



### Machine Details

- A width over slideways
- B<sub>1</sub> width of L.H. way
- B<sub>2</sub> width of R.H. way
- C<sub>1</sub> depth of L.H. way
- C<sub>2</sub> depth of R.H. way
- E height above slideways
- F<sub>1</sub> depth below L.H. way
- F<sub>2</sub> depth below R.H. way
- G<sub>1</sub> width to L.H. of slideway
- G<sub>2</sub> width to R.H. of slideway
- J end of saddle to end of ways

### Cover Details

- K stroke required including over-run
- L minimum closed length
- L maximum open length (Lmin + K)
- M distance to clear fittings

number of sections \_\_\_\_\_  
 brass, polyurethane or roller guides \_\_\_\_\_  
 special material requirements \_\_\_\_\_  
 access doors \_\_\_\_\_  
 extension brackets \_\_\_\_\_  
 walk-on \_\_\_\_\_  
 other \_\_\_\_\_

### Operating Conditions

- indoor  dry  abrasive  welding sparks  oil
- outdoor  coolant, type \_\_\_\_\_  magnetic  ash / dust / sand  chips / swarfs
- wet  corrosive  heat  salt water

Working Temperature: min \_\_\_\_\_ max \_\_\_\_\_ average \_\_\_\_\_

Travel Speeds: min \_\_\_\_\_ max \_\_\_\_\_ average \_\_\_\_\_

Pressure Internal / External: min \_\_\_\_\_ max \_\_\_\_\_ average \_\_\_\_\_

Frequency of Operation: cycles per minute: \_\_\_\_\_ cycles per day / year: \_\_\_\_\_ / \_\_\_\_\_